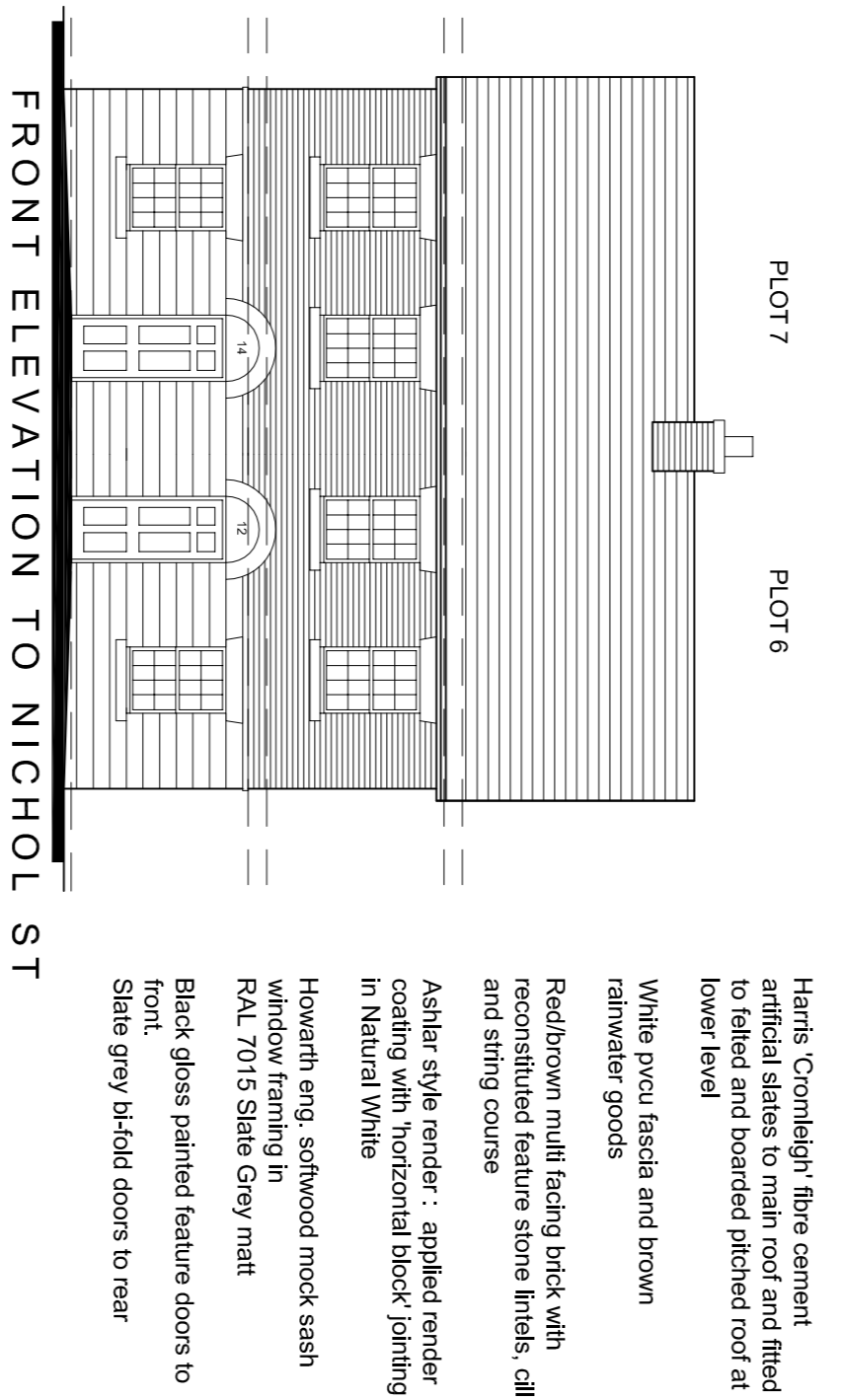
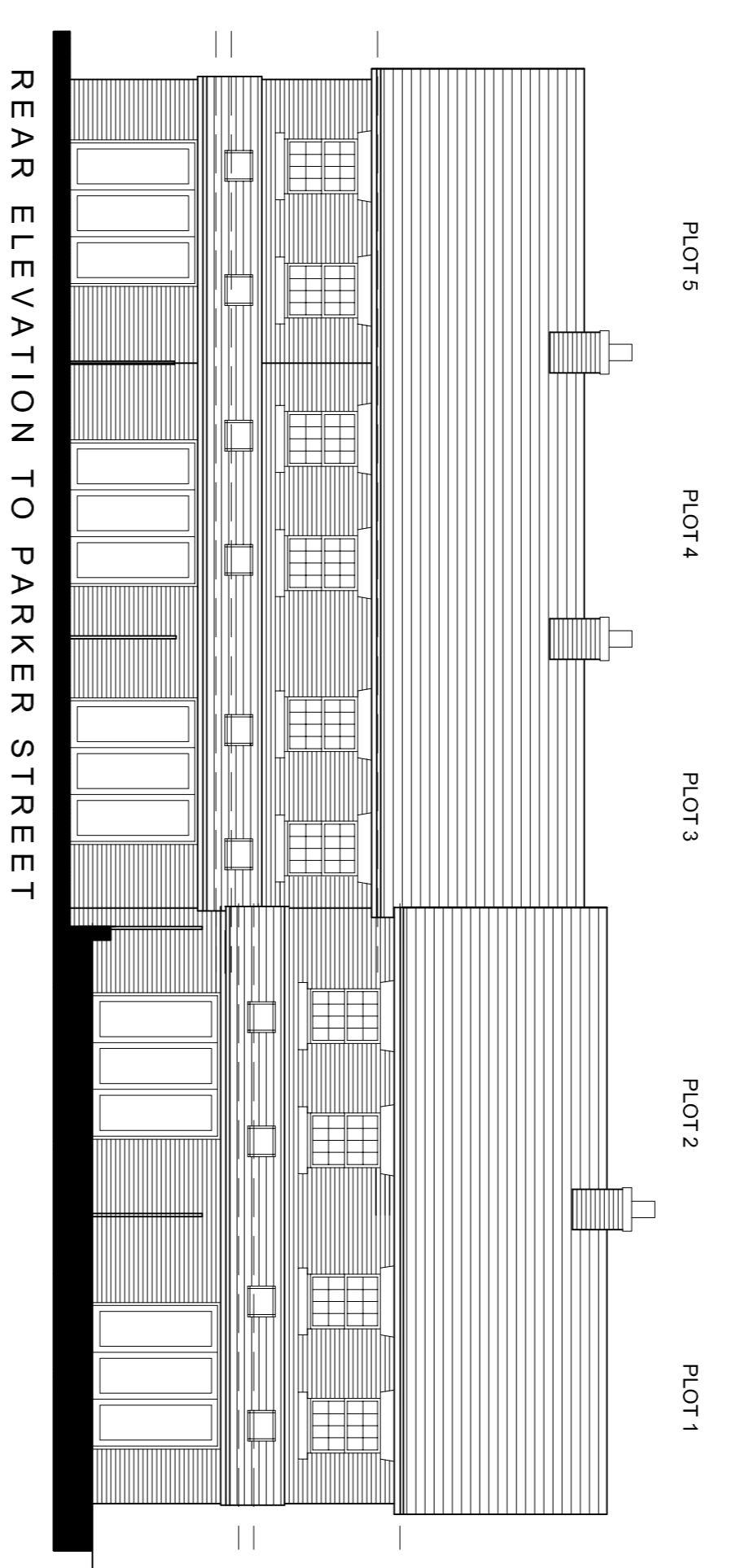
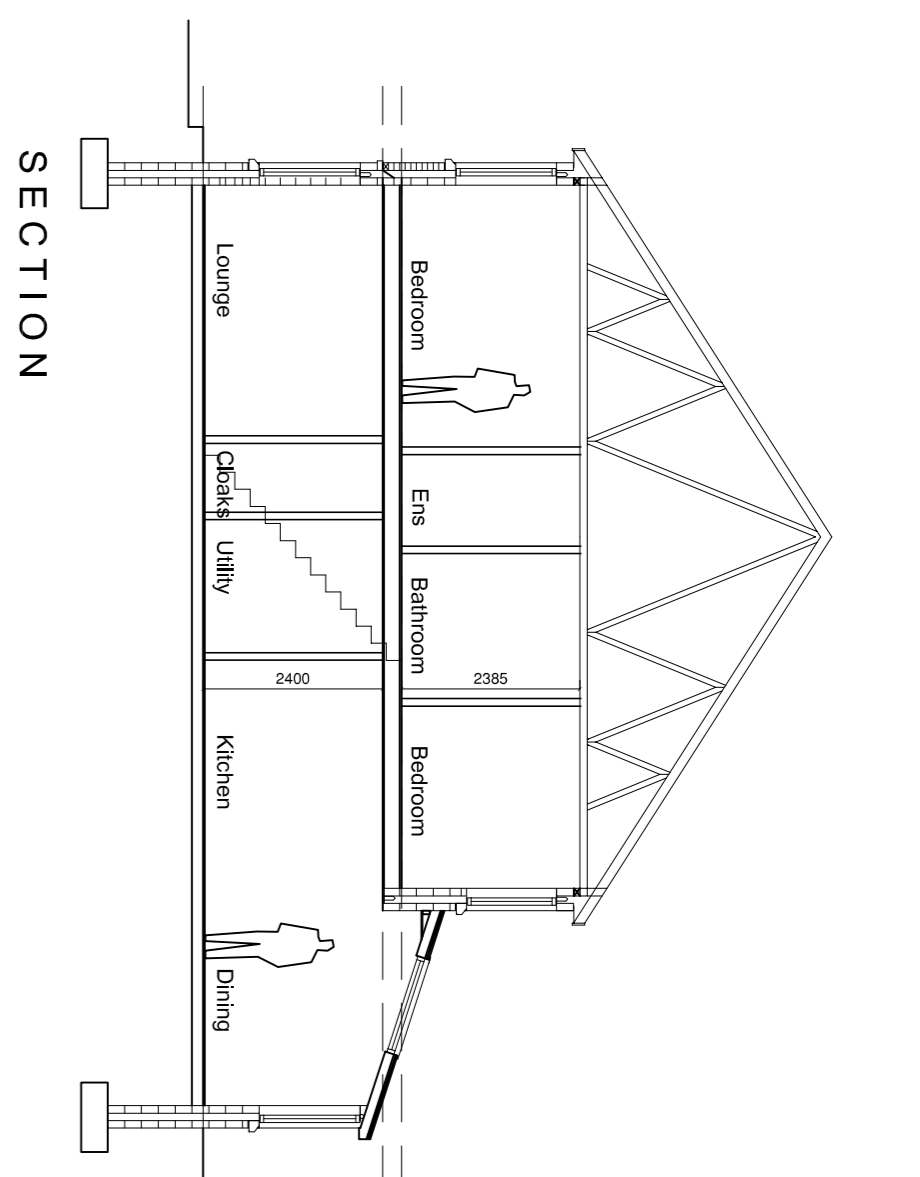
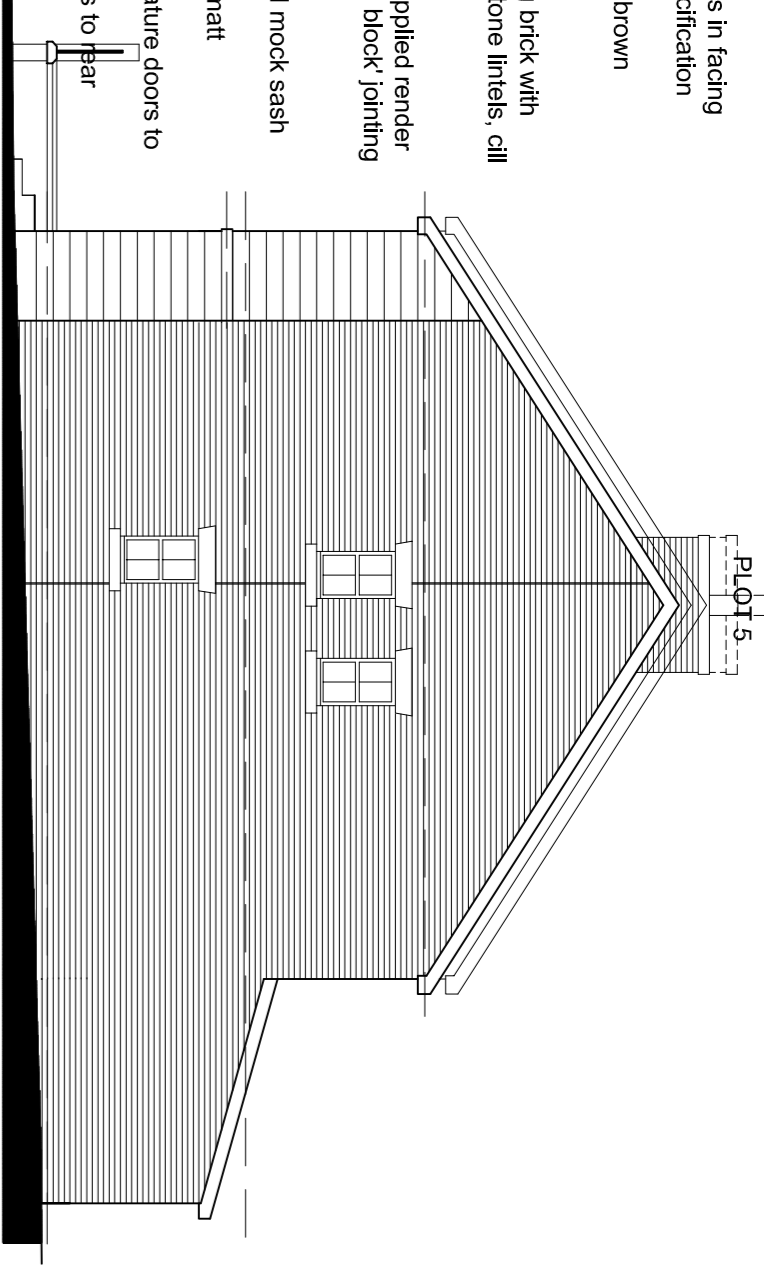
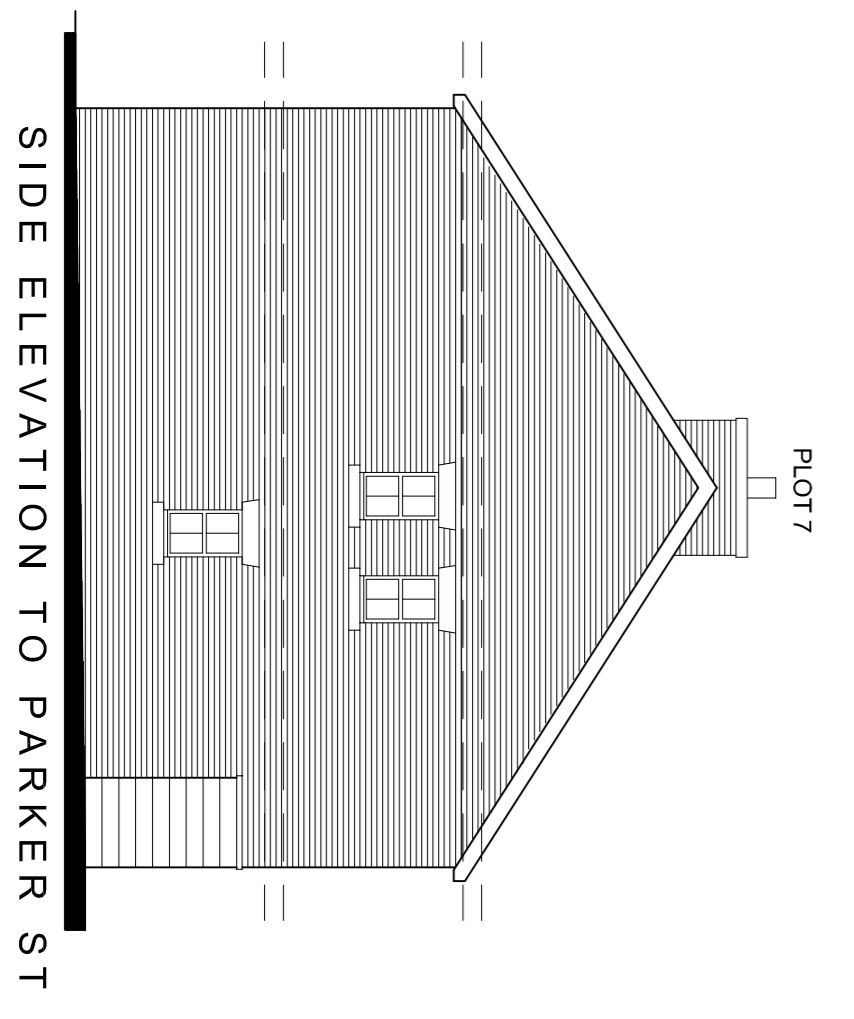
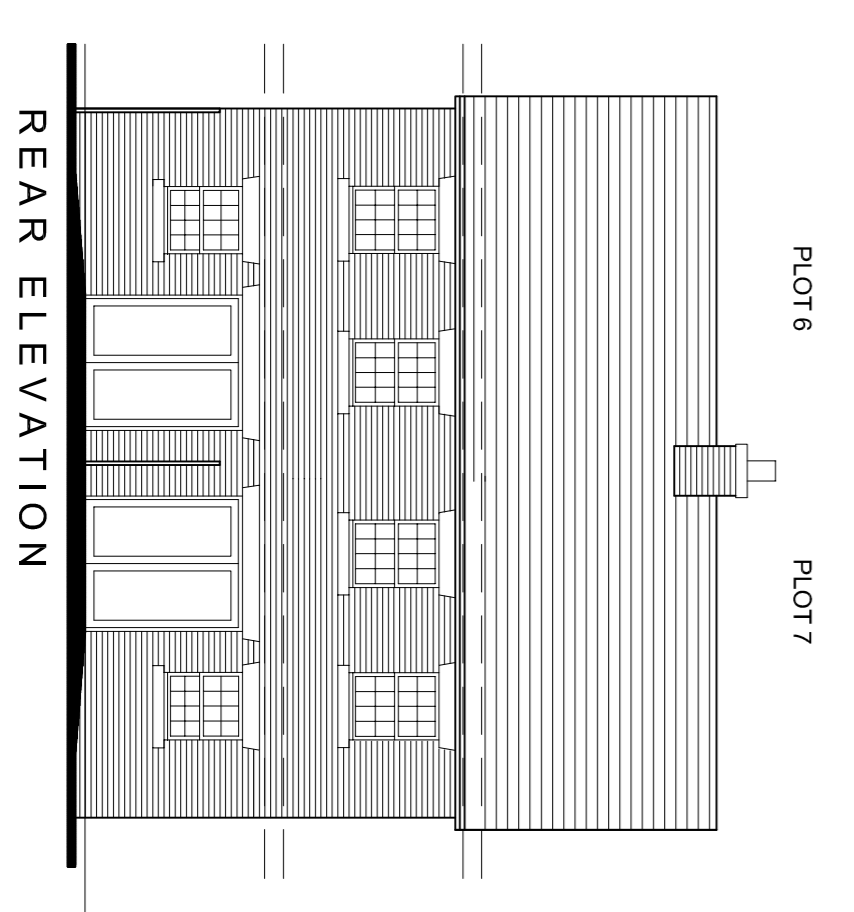
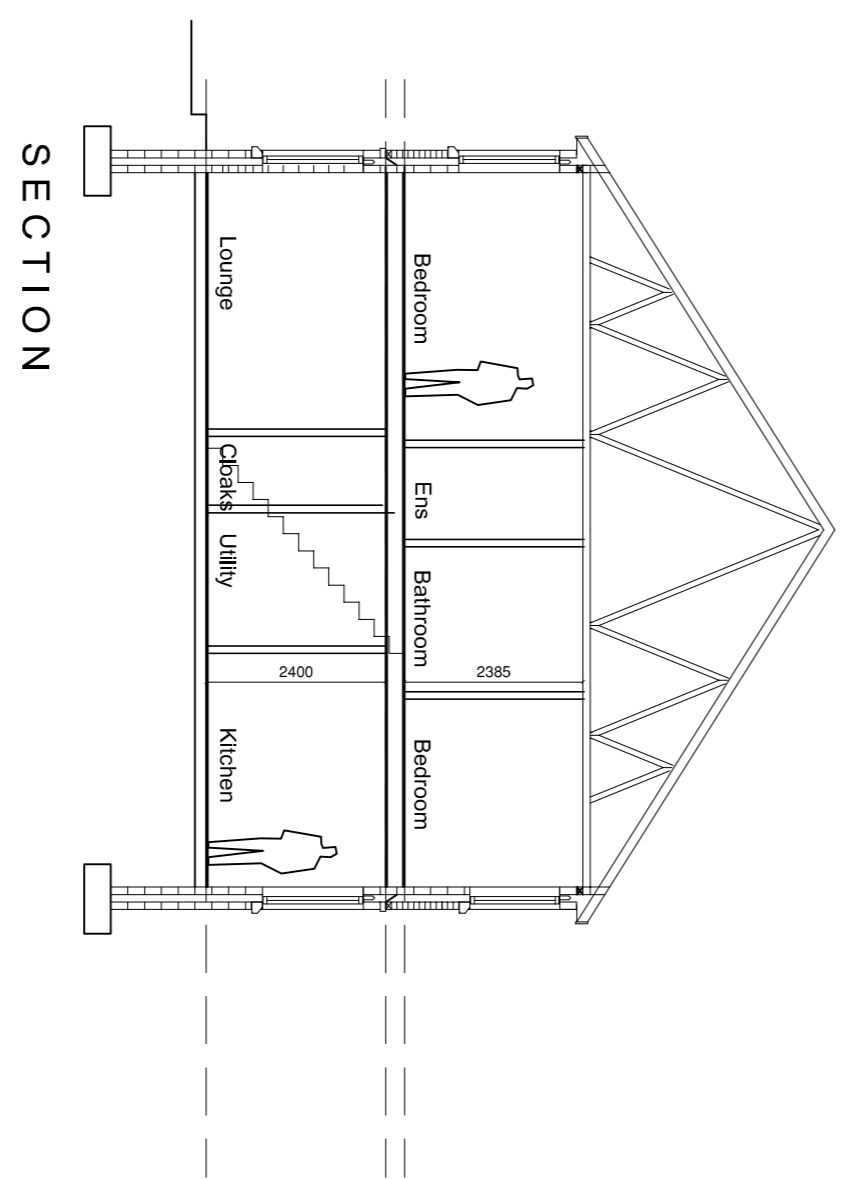
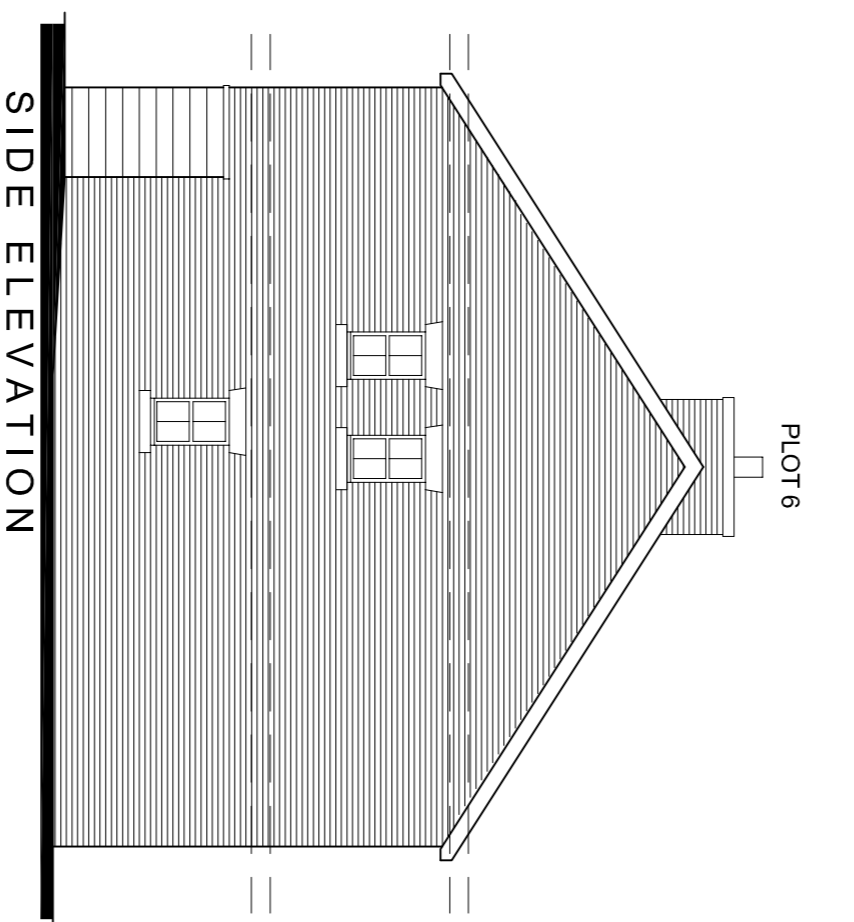


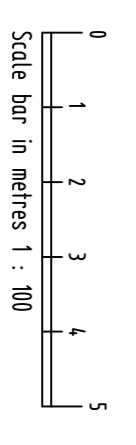
Harris 'Cornleigh' fibre cement artificial slates to main roof and filled to eaves and boarded pitched roof at lower level
 Dummy chimney stacks in facing brick to match site specification
 White pvcu fascia and brown rainwater goods
 Redbrown multi facing brick with reconstructed feature stone linels, cill and string course
 Ashlar style render : applied render coating with horizontal black jointing in Natural White
 Howarth eng. softwood mock sash window framing in FAL 7015 Slate Grey matt
 Black glass painted feature doors to front.
 Slate grey bh-fold doors to rear



Harris 'Cornleigh' fibre cement artificial slates to main roof and filled to eaves and boarded pitched roof at lower level
 White pvcu fascia and brown rainwater goods
 Redbrown multi facing brick with reconstructed feature stone linels, cill and string course
 Ashlar style render : applied render coating with horizontal black jointing in Natural White
 Howarth eng. softwood mock sash window framing in FAL 7015 Slate Grey matt
 Black glass painted feature doors to front.
 Slate grey bh-fold doors to rear



Drawn using AutoCAD LT
 Plot Size - A1
 Paper Size A1 - A800x 1190
 Resolution 600dpi
 Colour Format - Black & White
 Plot Software - AutoCAD LT
 Plot File is an accurate representation of application



B Revised to planning comments
 A Revised to levels

29 04 '13
 25 03 '13

ELEVATIONS

JAMES CARTER homes

Sovereign Court, Wyrefields, Poulton Business Park FV6 8JX
 Tel : 01253 894949 E-mail : admin@jcdjoinery.co.uk

Project :
 7 No. 3 Bed Dwellings
 Chapel Green, Development
 Park Road Chorley
 PR7 1DN
 Date : 06/02/2013
 Scale : 1 : 100 @ A1
 Project number:
 001306 / DG 03 A
 Drawn : Steve Norwood